

# Outer Dowsing Offshore Wind

## Environmental Statement

### Chapter 12 Offshore and Intertidal Ornithology

#### Volume 2 Figures

Date: March 2024

Document Reference: 6.2.12

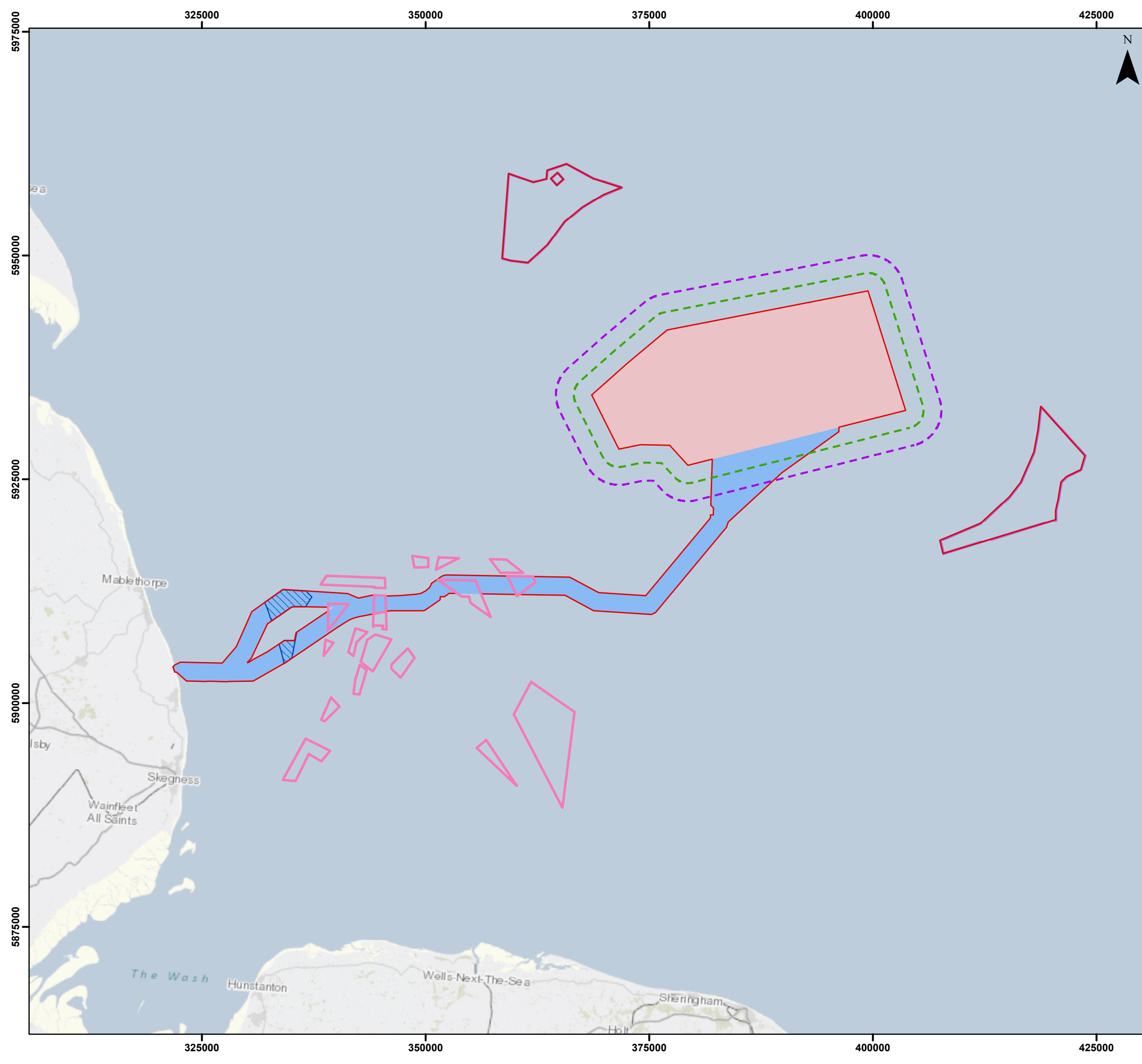
Pursuant to APFP Regulation: 5(2)(a)

Rev: 1.0

Company:	<b>Outer Dowsing Offshore Wind</b>	Asset:	<b>Whole Asset</b>			
Project:	<b>Whole Wind Farm</b>	Sub Project/Package:	Whole Asset			
Document Title or Description:	Chapter 12 Offshore and Intertidal Ornithology Figures					
Internal Document Number:	PP1-ODOW-DEV-CS-FIG-0012	3 <sup>rd</sup> Party Doc No (If applicable):	N/A			
Outer Dowsing Offshore Wind accepts no liability for the accuracy or completeness of the information in this document nor for any loss or damage arising from the use of such information.						
<b>Rev No.</b>	<b>Date</b>	<b>Status / Reason for Issue</b>	<b>Author</b>	<b>Checked by</b>	<b>Reviewed by</b>	<b>Approved by</b>
1	March 2024	DCO Application	GoBe	GoBe	Shepherd & Wedderburn	Outer Dowsing

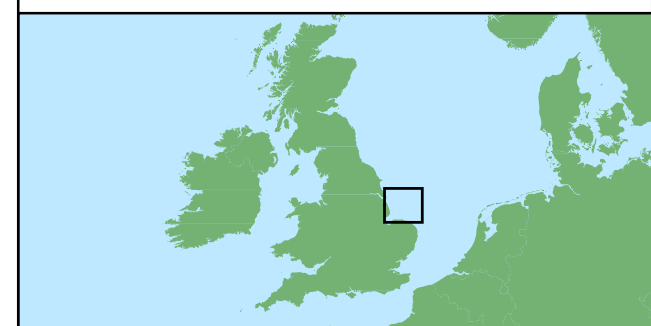
## Table of Figures

- Figure 12.1 Offshore and intertidal Ornithology (document reference 6.2.12.1)
- Figure 12.2 Disturbance impacts of the Offshore Reactive Compensation Platform (document reference: 6.2.12.2)



**Legend**

- Offshore Order Limits
- Array Area
- Offshore Export Cable Corridor
- ORCP Area
- Artificial Nesting Structure Area
- Biogenic Reef Restoration Area
- 2km Buffer from Array Area
- 4km Buffer from Array Area



Coordinate System: WGS 1984 UTM Zone 31N  
 0 10 20 km  
 Scale: 1:400,000 A3 Page Size

Environmental Statement  
 Ornithological Study Area for the Project  
 Figure 12.1

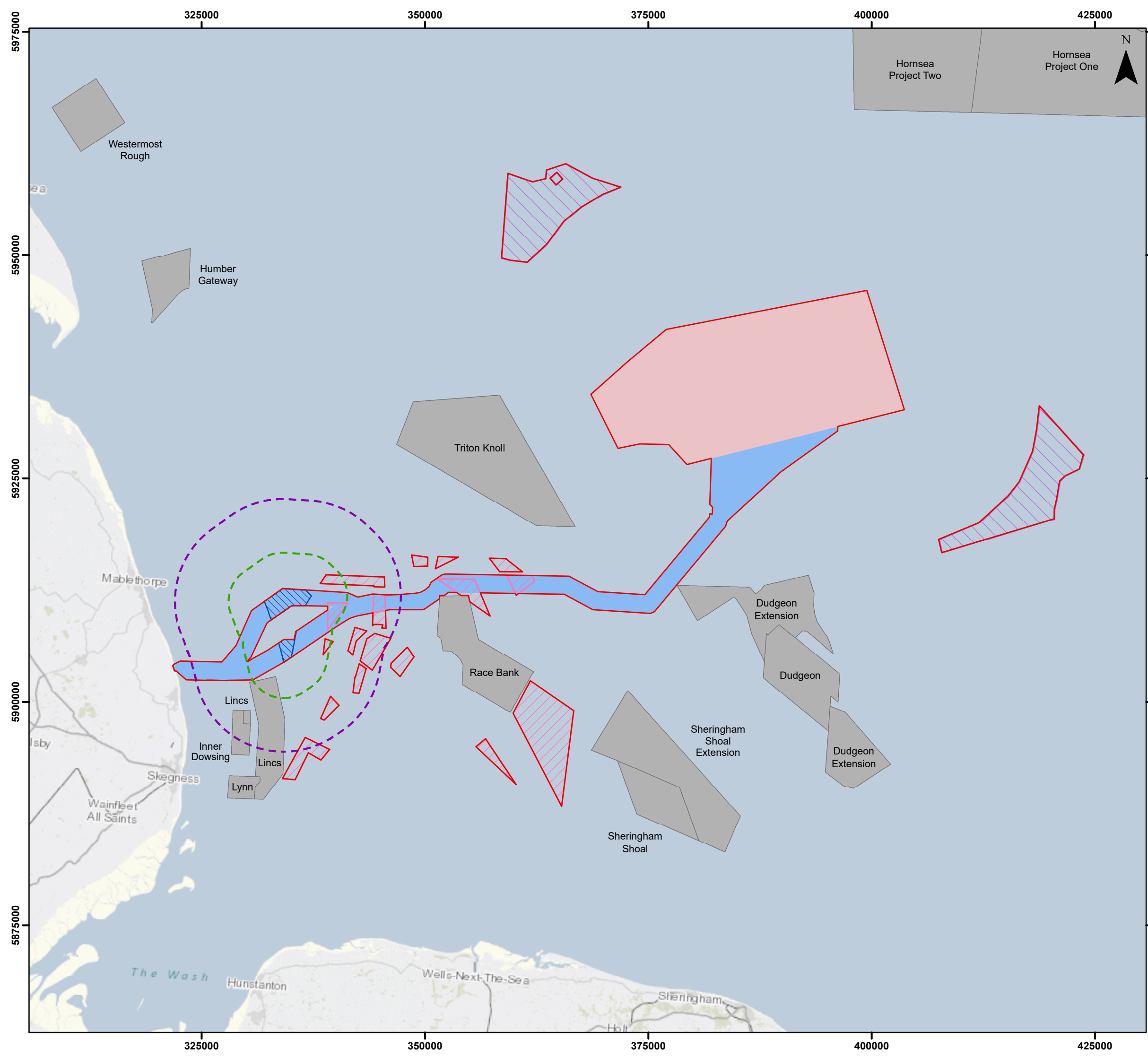


Date: 13/02/2024  
 Produced By: BPHB  
 Revision: 0.1

Contains ESRI Basemapping;  
 Contains OS data © Crown  
 Copyright and database right  
 2020

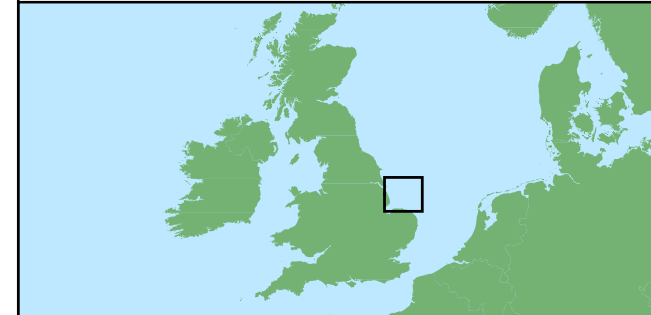
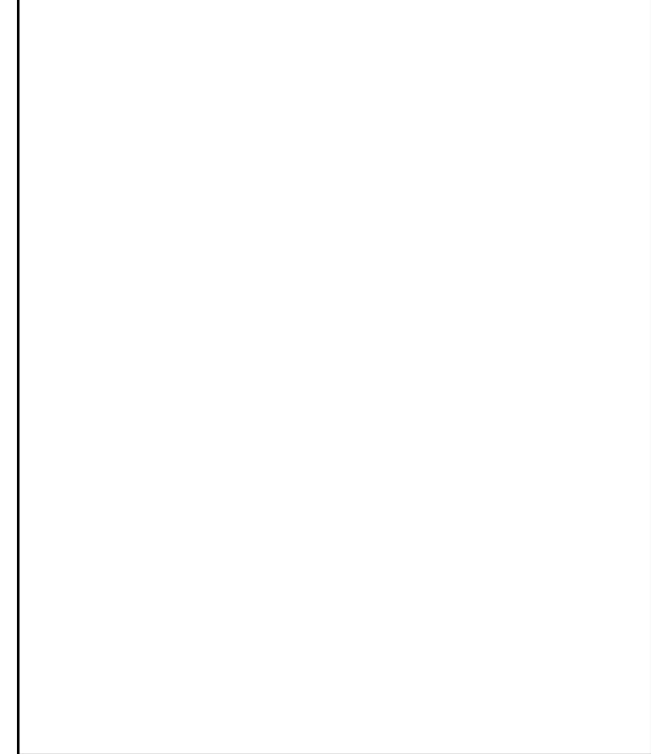
**GoBe**

Document Path: Z:\GIS\GIS - Projects\0152 Outer Dowsing EIA\GIS\Figures\ES\Ornithology\ODOW\_0152\_ORNI\_Fig12.1\_Ornithological\_Study\_Area.mxd



**Legend**

- Offshore Order Limits
- Array Area
- Offshore Export Cable Corridor
- ORCP Area
- 4km Buffer from ORCP Area
- 10km Buffer from ORCP Area
- Artificial Nesting Structure Area
- Biogenic Reef Restoration Area
- Offshore Wind Farm Sites



Coordinate System: WGS 1984 UTM Zone 31N  
 0 10 20 km  
 Scale: 1:400,000 A3 Page Size

Environmental Statement  
 Displacement Buffers from the ORCPs  
 Figure 12.2



Date: 08/03/2024  
 Produced By: BPHB  
 Revision: 0.1

**GoBe**

Contains ESRI Basemapping;  
 Contains OS data © Crown  
 Copyright and database right  
 2020

Document Path: Z:\GIS\GIS - Projects\0152 Outer Dowsing EIA\GIS\Figures\ES\Orthology\ODOW\_0152\_ORNI\_Fig12.2\_Displacement\_Impacts\_ORCP.mxd